

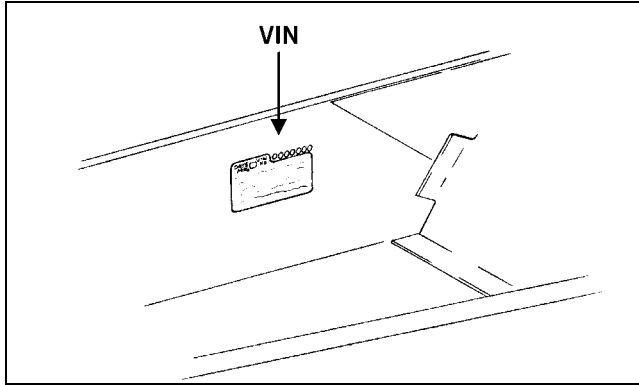
---

---

## Snowmobile Identification

---

The Arctic Cat Snowmobile has two important identification numbers. The Vehicle Identification Number (VIN) is stamped into the tunnel near the right-side footrest. The Engine Serial Number (ESN) is stamped into the crankcase of the engine.



0726-383

These numbers are required to complete warranty claims properly. No warranty will be allowed by Arctic Cat Inc. if the engine serial number or VIN is removed or mutilated in any way.

---

---

## Recommended Gasoline and Oil

---

### RECOMMENDED GASOLINE (Carbureted Models)

The recommended gasoline to use in these snowmobiles is 87 minimum octane regular unleaded. In many areas, oxygenates (either ethanol or MTBE) are added to the gasoline. Oxygenated gasolines containing up to 10% ethanol or up to 15% MTBE are acceptable gasolines; however, whenever using oxygenated gasolines, the carburetor main jet must be one size larger than the main jet required for regular unleaded gasoline. For example, if a 400 main jet is recommended for regular unleaded gasoline, a 410 main jet must be installed if using an oxygenated gasoline.

When using ethanol blended gasoline, it is not necessary to add a gasoline antifreeze since ethanol will prevent the accumulation of moisture in the fuel system.

#### CAUTION

**Do not use white gas or gasolines containing methanol. Only Arctic Cat approved gasoline additives should be used.**

### RECOMMENDED GASOLINE (EFI Models)

The recommended gasoline to use in these snowmobiles is 87 minimum octane regular unleaded. In many areas, oxygenates (either ethanol or MTBE) are added to the gasoline. Oxygenated gasolines containing up to 10% ethanol or up to 15% MTBE are acceptable gasolines. Do not use gasolines containing methanol.

#### CAUTION

**Do not use white gas or gasoline containing methanol. Only Arctic Cat approved gasoline additives should be used.**

### RECOMMENDED OIL

The recommended oil to use in the oil-injection system is Arctic Cat 50:1 Injection Oil (for standard models) or Arctic Cat Synthetic APV 2-Cycle Oil (for APV models). The oil is specially formulated to be used either as an injection oil or as a pre-mix oil (for carbureted model break-in) and meets all of the lubrication requirements of the Arctic Cat snowmobile engine.

---

---

## Break-In Procedure

---

The Arctic Cat 2-stroke engine (when new or rebuilt) requires a short break-in period before the engine is subjected to heavy load conditions. Arctic Cat requires that the first tankful of fuel be premixed at a 100:1 ratio in all oil-injection models.

During the break-in period, a maximum of 1/2 throttle is recommended; however, brief full-throttle accelerations and variations in driving speeds contribute to good engine break-in.

#### CAUTION

**DO NOT exceed the one (1) tankful limitation of a 100:1 gas/oil break-in mixture. Continuous use of a gas/oil mixture, unless consistently operating in extremely cold conditions (-26°C/-15°F or colder), could cause spark plug fouling and excessive carbon buildup. A 100:1 gas/oil mixture must be used in conjunction with the oil-injection system to ensure adequate engine lubrication in extremely cold conditions.**

---

---

## Genuine Parts

---

When replacement of parts is necessary, use only genuine Arctic Cat parts. They are precision-made to ensure high quality and correct fit.