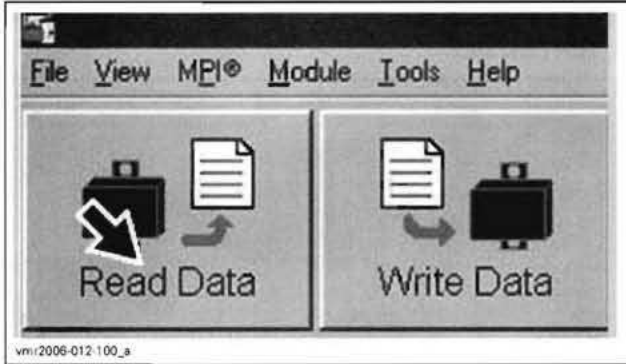
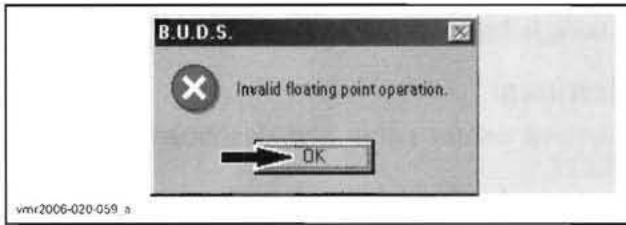
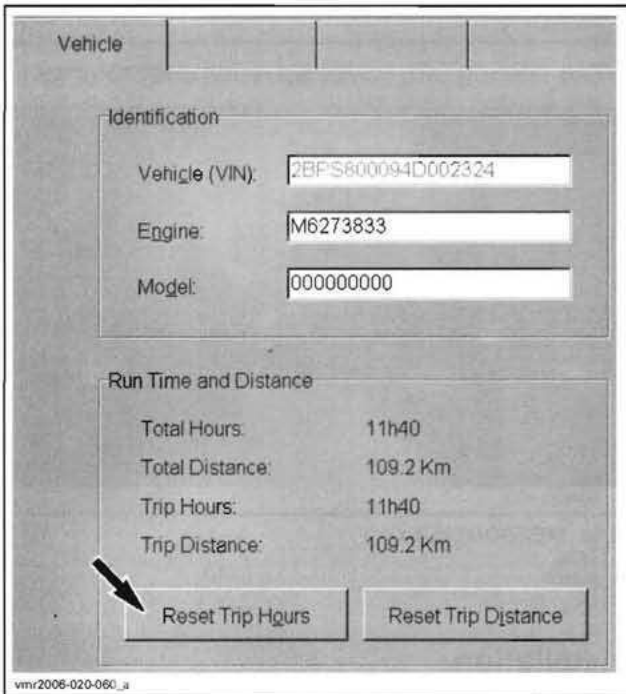


## Section 06 ELECTRICAL SYSTEM

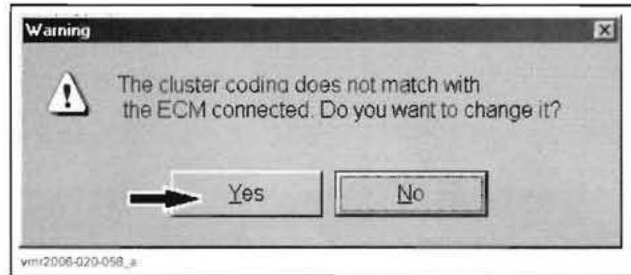
### Subsection 05 (LIGHTS, INSTRUMENTS AND ACCESSORIES)



Then, computer and B.U.D.S. will be available as usual. Reset the Trip hours either from B.U.D.S. or on speedometer. The message will not appear anymore.



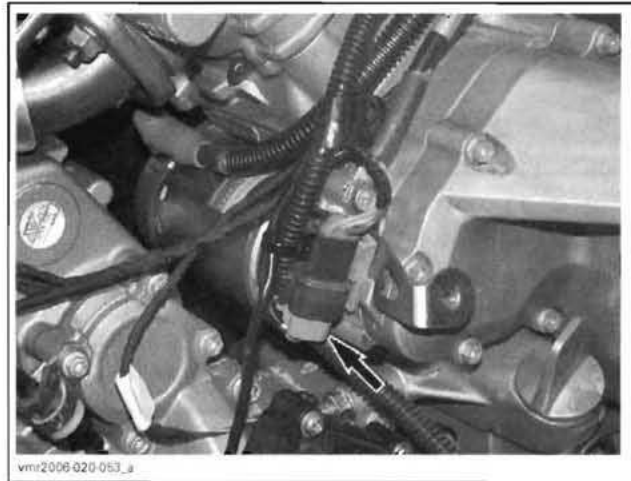
Whenever multi-function speedometer is replaced, it is required to use B.U.D.S. to register it in ECM. Simply click YES when the following message appears.



**IMPORTANT:** If a multi-function speedometer from another vehicle model is installed and is not registered in ECM through B.U.D.S., engine starting will not be allowed until speedometer is registered with proper coding.

### VEHICLE SPEED SENSOR (VSS)

Disconnect speed sensor connector and detach from engine to ease access.



TYPICAL - V-810 ENGINE SHOWN

